

# Fastrack Your Device Management with Scalefusion Enabled Azure AD/Office 365 Features

Enhance your device management and business productivity. Leverage the Office 365/Azure AD-specific features straight from the Scalefusion dashboard.

## Overview

Experience a comprehensive suite of products to simplify your device management in the enterprise environment. Configure extensive Office 365/Azure Active Directory (AD)-based settings and improve your business's productivity with Scalefusion MDM.

## Benefits

- Simplified device enrollment and provisioning
- Streamlined application management
- Enhanced security for corporate data
- Simplified importing of users and groups
- Secure and easy identity and access management
- Easy enforcement of restrictions

## Introduction

Scalefusion MDM is a powerful device management platform for organizations to simplify the remote management of their devices and endpoints deployed at various locations. In a world where enterprise mobility is rapidly gaining traction, organizations seek tools and solutions that can help them streamline their remote operations and secure their corporate data and devices.

Scalefusion offers a plethora of features for IT admins of diverse industries to effortlessly manage, monitor and secure their devices. With an aim to add an extra layer of security and provide greater ease of provisioning devices, Scalefusion offers Microsoft Office 365 and Azure AD-based features that can be configured straight from the Scalefusion console.

## Office 365/Azure AD: The Formula to Enhance Business Productivity

Office 365 integrated with Azure Active Directory is a cloud-based productivity suite that helps enterprises manage versatile aspects of their businesses with a wide range of productivity apps, cloud services, device management and security tools in a unified manner. Azure AD acts as the backbone of the Office 365 suite and enables businesses to leverage simplified identity and access management and integrate their on-premise Active Directory to sync all the employee contacts, accounts, passwords and also set up a single sign-on.

Scalefusion MDM offers several Office 365/Azure AD-based features straight from our dashboard to deliver a connected experience to our users.

# Scalefusion's O365/Azure AD-specific Capabilities

## 1. Azure AD-based dashboard access

Scalefusion helps businesses automate the process of dashboard access with the help of AD integration. IT admins can leverage single sign-on (SSO) and skip the tedious sign-in protocols and simply access the dashboard using their Office 365 or Azure AD credentials.

All the existing IT admins can simply migrate to the Azure AD-based sign-in or new IT admins can be invited to access the Scalefusion dashboard with Azure AD credentials. Scalefusion also empowers IT admins to import users or user groups from Office 365 AD for BYOD management.

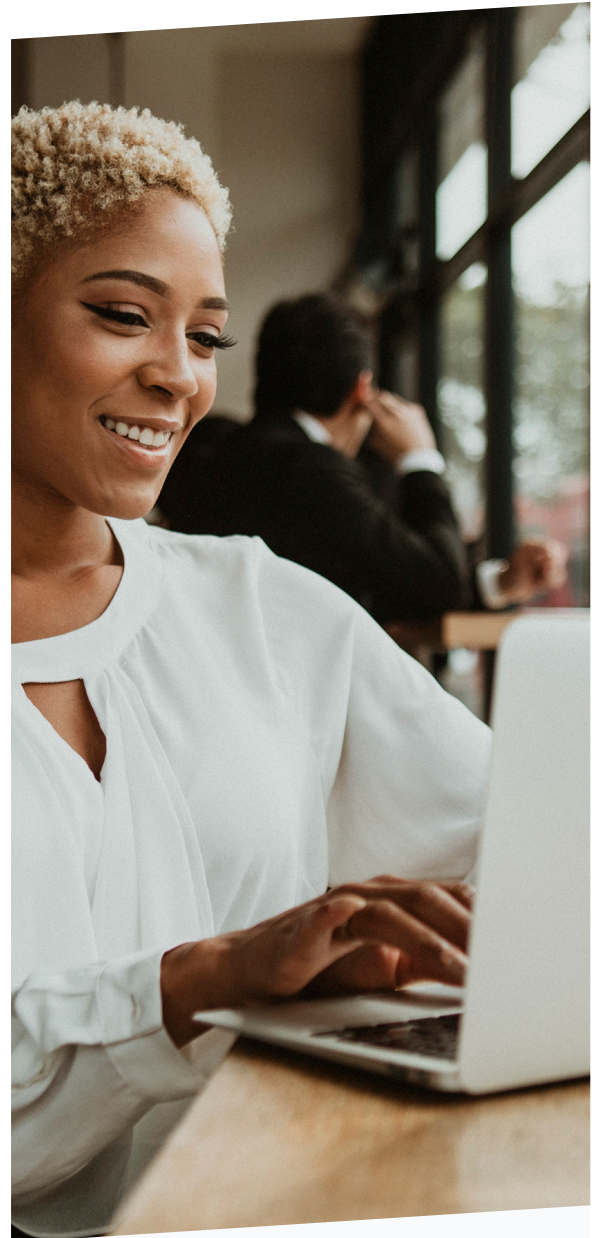
## 2. Azure AD-based Device Enrollment

Scalefusion enables businesses that manage their users with Azure AD to automate their user's Windows device enrollment on the Scalefusion dashboard. Organizations can automatically enroll their new Windows devices onto the Scalefusion dashboard directly whenever a new user is added to the enterprise's Azure AD. Businesses can save time on tedious device enrollment procedures with the Azure AD-based enrollment.

Enterprises using Azure AD and Windows 10 devices can leverage an Out-of-the-box experience with Scalefusion. All new Windows 10 devices that are added to the organization's Azure AD can directly be enrolled with Scalefusion, right from the time of unboxing.

## 3. O365 Apps Deployment to Windows devices

Scalefusion enables IT admins to remotely install O365 apps on their managed Windows 10 devices. On creating the app configuration on the Scalefusion dashboard, IT admins can perform an array of tasks such as viewing the status of app installation, installing or uninstalling the configuration to device profiles, editing and deleting the configuration.



### Try it now for free

Register for a free 14-day evaluation at [www.scalefusion.com](http://www.scalefusion.com)

### Get a Demo

Request a demonstration and see how Scalefusion can help you in managing your devices and securing your corporate data.

### Book a Demo

#### 4. Office 365 DLP Policies

Businesses can protect the data within their Office 365 apps on their managed Android & iOS devices using Microsoft Intune Data Loss Prevention (DLP) policies such as preventing corporate data backup and copy, data transfer restrictions, configuring the location of storage, restricting incoming data from other apps, enforcing secure browsing and encrypting data on the managed apps.

With the App Protection Policies or Data Loss prevention policies businesses can secure their corporate data across Microsoft Office 365 apps and applications that support Intune SDK, on Android & iOS devices.

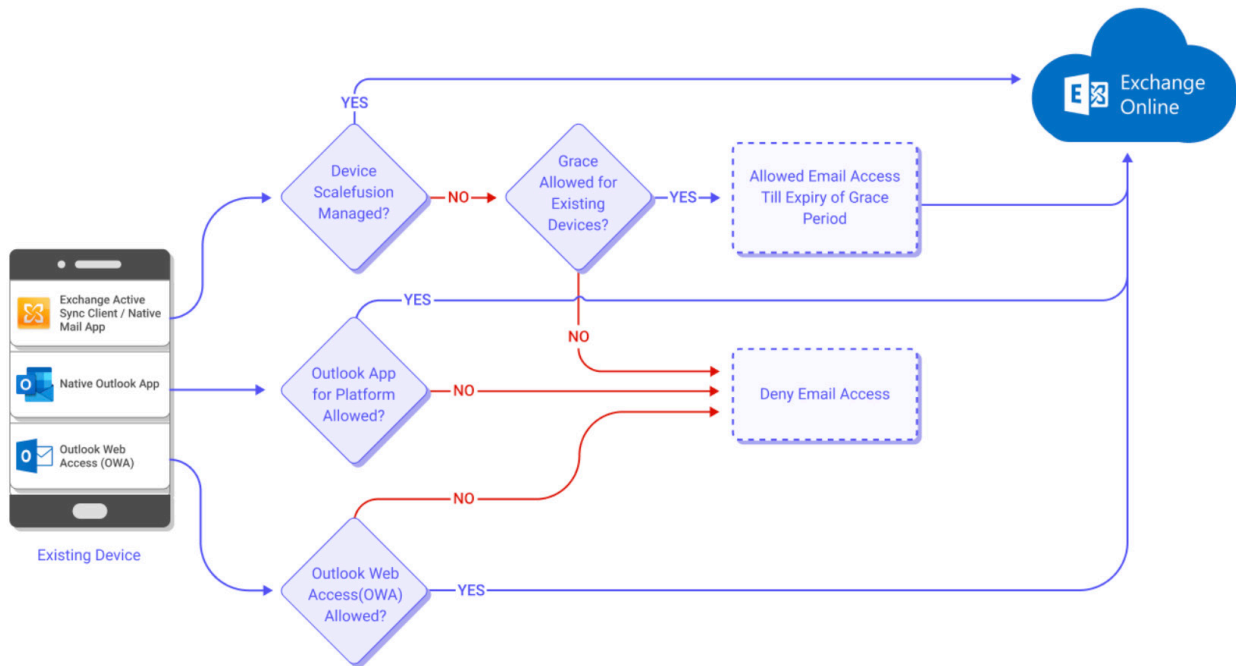
Data Loss Prevention Policies created from Scalefusion secure corporate information on the following Office 365 apps,

- Microsoft Outlook
- Microsoft OneNote
- Microsoft Excel
- Microsoft Powerpoint
- Microsoft Word

#### 5. Conditional Email Access for Exchange Online

Office 365/Exchange Online is one of the most commonly used email providers by businesses globally. To secure corporate emails in order to prevent data breaches, especially in a BYOD environment, Scalefusion offers Conditional Email Access for Exchange Online.

Businesses can limit their corporate email inbox access to only the Scalefusion-managed devices to ensure enterprise policy compliance. With this, only the enrolled devices can access corporate emails via Microsoft Office 365/Exchange Online. The CEA policy can be applied in the form of a Global Default Access policy to all the users in the organization or selected target users.





## 6. Azure AD Integration for Windows Autopilot

IT admins can automatically join devices to Azure AD using AutoPilot on completion of Azure AD integration. You can easily auto-enroll devices into Scalefusion, restrict admin account creation, create and auto-assign devices to configuration groups based on a device's profile and customize the out-of-the-box experience.

## 7. Windows BitLocker Configuration

The devices configured using Office 365 AD credentials can make use of Microsoft's built-in volume encryption feature that protects encryption for the device's hard disk. With this, IT admins can take their corporate data security to the next level and fully encrypt the data on the hard disk. The encrypted data can be made available for access only via a PIN and the recovery of this data is made possible when the hard disk is wiped off.

## 8. Windows Hello Integration for Secure Access

Scalefusion lets businesses integrate Windows Hello into the dashboard and configure additional settings for securing access to their Azure-AD joined managed Windows 10 devices. With this, your end-users can gain instant access to their devices with gesture-based sign-in such as PIN, biometric sign-on or using external devices such as a fingerprint scanner.

### Try it now for free

Register for a free 14-day evaluation  
at [www.scalefusion.com](http://www.scalefusion.com)

### Get a Demo

Request a demonstration and see  
how Scalefusion can help you  
in managing your devices and  
securing your corporate data.

### [Book a Demo](#)



## Summary

Office 365/Azure AD is a preferred choice for many businesses owing to its cloud-based platform that allows businesses to manage their data from anywhere, using any device. The O365/Azure AD integration with Scalefusion helps IT admins to experience enhanced management and compliance. Get the best out of your device management processes with Scalefusion-enabled O365/Azure AD capabilities.



### Try it now for free

Register for a free 14-day evaluation at [www.scalefusion.com](http://www.scalefusion.com)

### Get a Demo

Request a demonstration and see how Scalefusion can help you in managing your devices and securing your corporate data.

### Book a Demo



### About Scalefusion

Ambitious companies around the world trust Scalefusion to secure and manage endpoints including smartphones, tablets, laptops, rugged devices, POS, and digital signages. Our mission is to make Device Management simple and effortless along with providing world class customer support.

### Enterprise Sales & Partnerships

[sales@scalefusion.com](mailto:sales@scalefusion.com)  
[partners@scalefusion.com](mailto:partners@scalefusion.com)

### Call Us

(US) +1-415-650-4500  
 (INDIA) +91-8499-835020

Copyright© 2022 ProMobi Technologies. All rights reserved. Scalefusion, the Scalefusion logo mark appearing herein are property of ProMobi Technologies Pvt. Ltd. All other marks are the property of their respective owner/s.